


WARDOUR CASTLE

WILTSHIRE

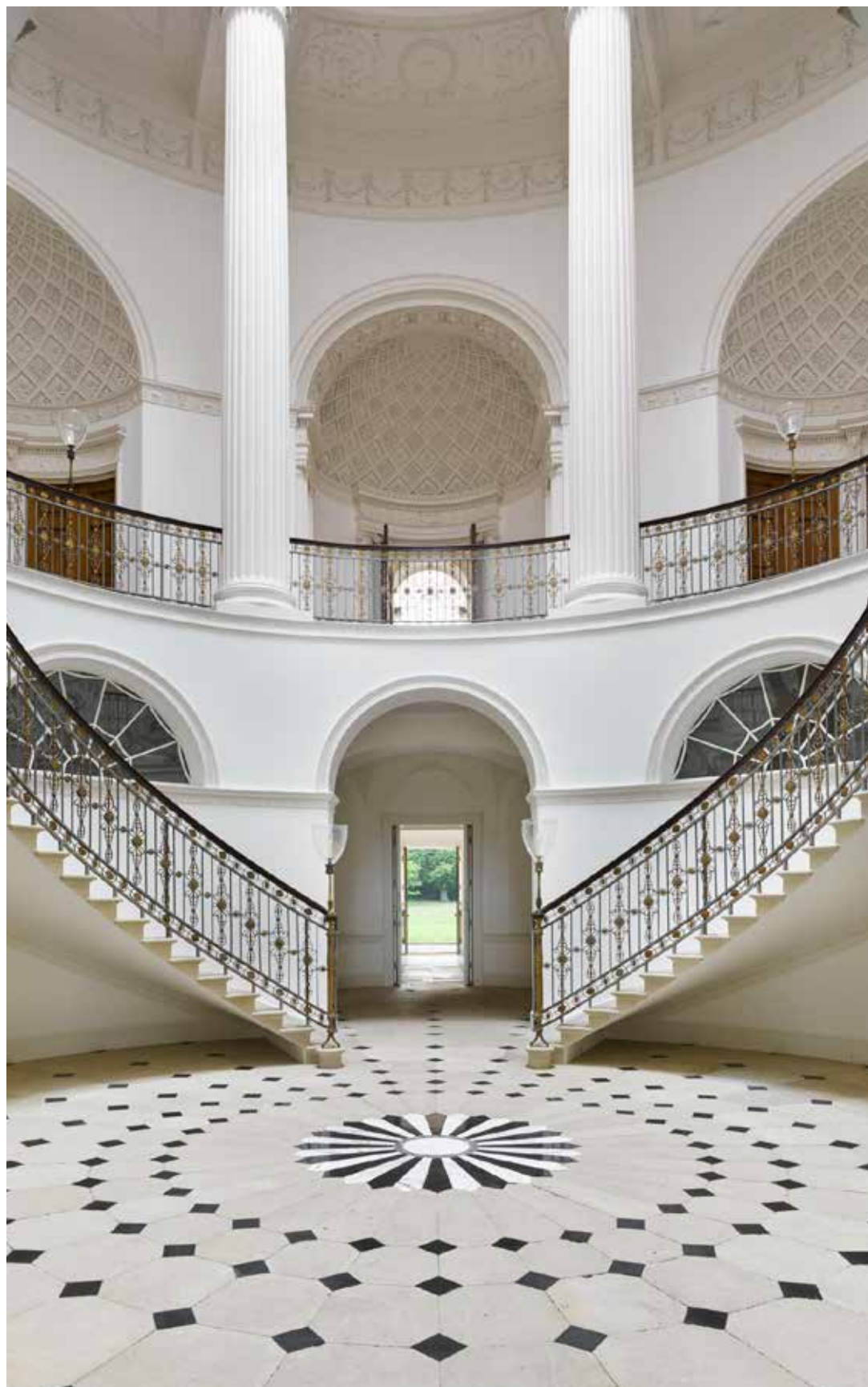




The apartment has unimpeded views across the Estate to the Nadder Valley and unspoilt Wiltshire countryside



-
- Magnificent Entrance Hall Rotunda State Room
 - 4 Reception Rooms
 - Private Kitchen / Breakfast Room
 - Secondary Kitchen
 - Office/Library
 - Garden Room
 - Six Bedrooms
 - Six Bathrooms
 - Gym
 - Cellar
 - Approximately 5 acres of extensive gardens and rights over further grounds
-



WARDOUR CASTLE

The principal apartment of one of the finest Palladian mansions in the country, and reputedly the largest house in Wiltshire.

Comprising over 23,000 sq ft of accommodation on the ground and first floors, including most of the state rooms of the Castle and the magnificent 60ft central Rotunda.

Initially converted in 2000 under the supervision of world renowned minimalist architects, John Pawson, the property is now a home of unparalleled distinction.

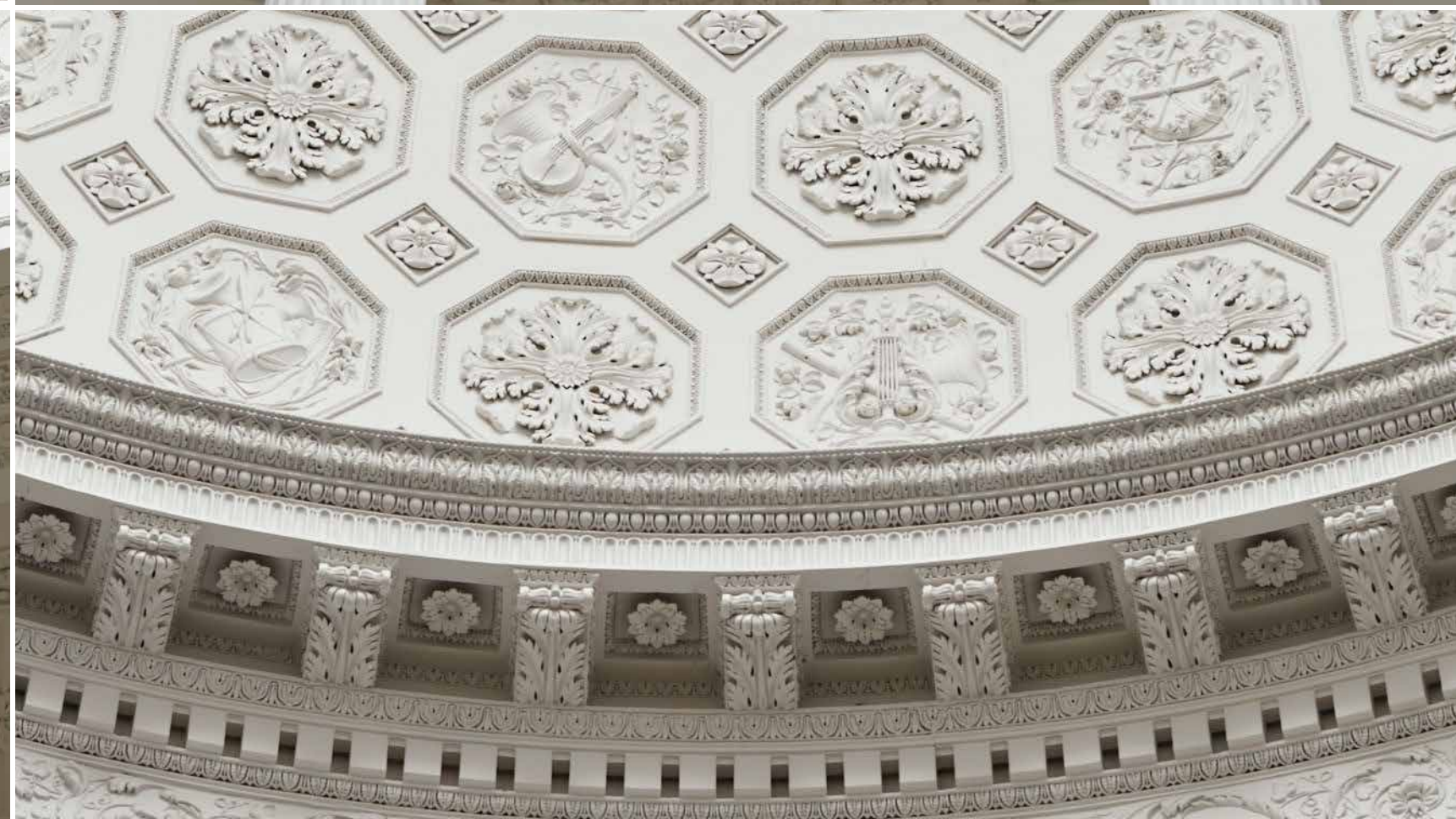
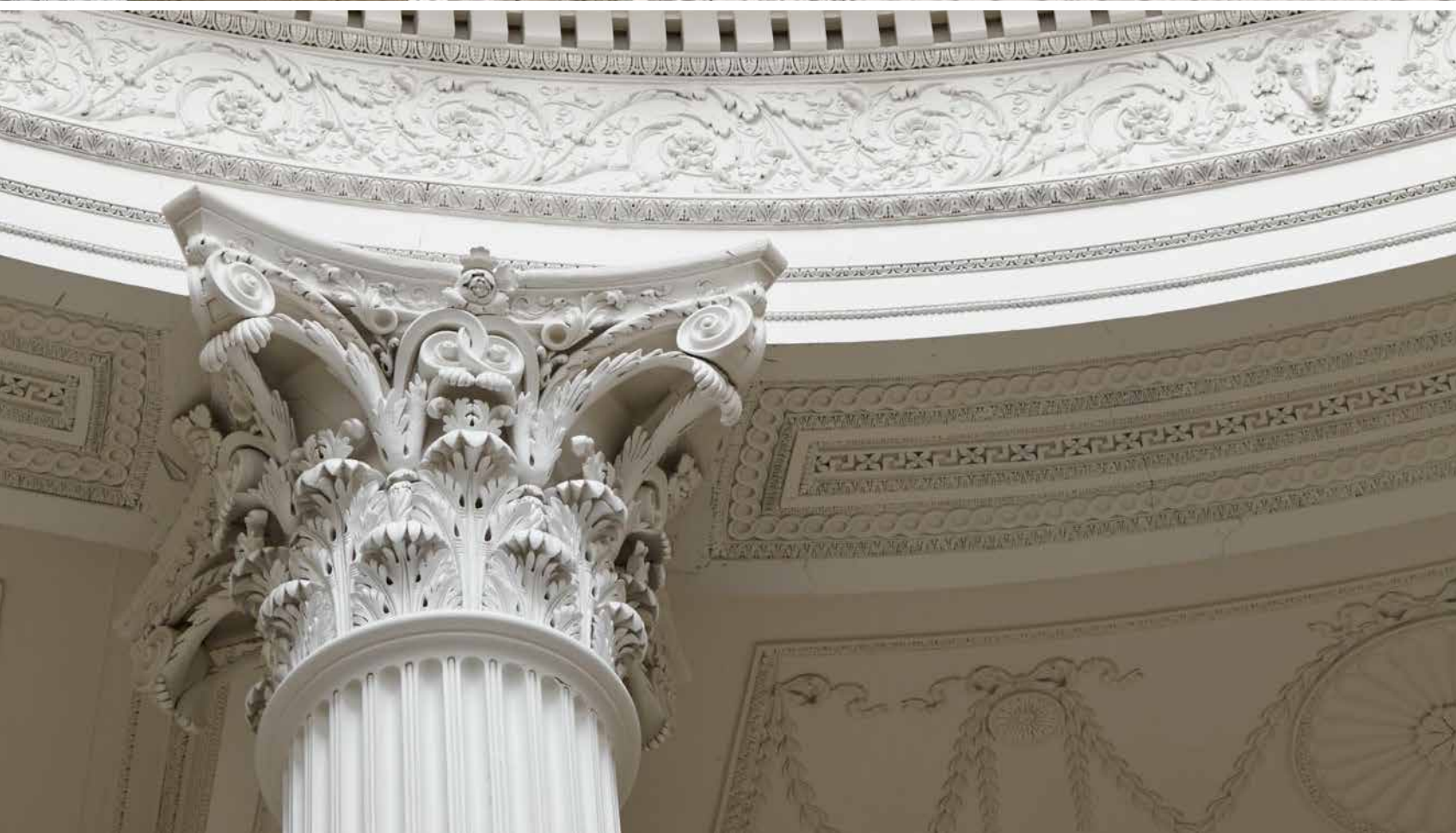
EARLY HISTORY- 1770's

Considered the finest work of the great Palladian architect, James Paine, New Wardour Castle is one of Britain's most acclaimed Georgian houses. Its most striking feature, the 60ft Rotunda containing the central staircase, has been described as unsurpassed in any building of the 18th Century in England.

Commissioned by the 8th Lord Arundell in 1770, in celebration of his marriage to a Lincolnshire heiress and the reunification of two branches of the family, the property replaced Old Wardour Castle as the family seat and continued a fine architectural tradition dating from the Estate's record in the Domesday book.

ENTRANCE

The Central Hall or Rotunda is approached from the entrance hall via an ante-hall with display niches and archway. The Rotunda, which is circular with a diameter of about 45ft, rises about 60ft to a magnificent skylit dome supported on eight composite columns. Twin cantilevered staircases with graceful balustrades rise from the ground floor to a circular gallery on the first floor or piano nobile, which provides access via slightly curved and panelled doors to the principal state rooms. Around the side of the Gallery are six beautifully decorated coffered apses or deep niches. The north niche has coupled demi-columns and the south niche has Ionic columns with a straight entablature. The west niche incorporates a rare chamber organ which was installed by the 8th Lord Arundell in circa 1894





Twin cantilevered staircases
staircases with graceful
balustrades rise from the
ground floor to a circular
gallery on the first floor





FIRST FLOOR

One of two Dining Rooms, approached via a doorway flanked on both sides by Doric pilasters and surmounted by an entablature with decorated plaster work above incorporating the Arundell coat of arms.

The principal feature of this room is the magnificent ceiling with Lunettes and spandrels intricately decorated with long foliage scrolls, trophies and arabesques in stucco. Within the centre of the oval ceiling design there is a beautiful painting being a copy of Guido Renis' 'Aurora' by Pompeo Battoni. There is also a fine marble fireplace incorporating a carved figure and flanked by marble columns with a cast iron grate and marble hearth.





The White Room has cornices incorporating vase and flower patterns gilded entablature over the doors and a marble fireplace with intricate floral patterns and sculptured figures with a cast iron grate. Interconnecting double doors to:-

The Saloon, the largest state room with a Venetian window having views towards the ruins of Old Wardour Castle. Coved ceiling with elaborate gilded and painted cornicing. Doorways and windows with entablatures over.

The Great Dining Room with Doric pilasters and an entablature and pediment over Incorporating the Arundell coat of arms. High barrel-vaulted ceiling with cornice. Venetian window overlooking the forecourt and north garden. Marble fireplace with sculptured figures on marble slips and cast iron grates.

Interconnecting door to:- Master Bedroom, approached from the Rotunda via a curving passageway with two sets of doors. Marble fireplace with sculptured designs and inlaid

slips with a cast iron grate. Decorative cornice and frieze. Entablatures over doors.

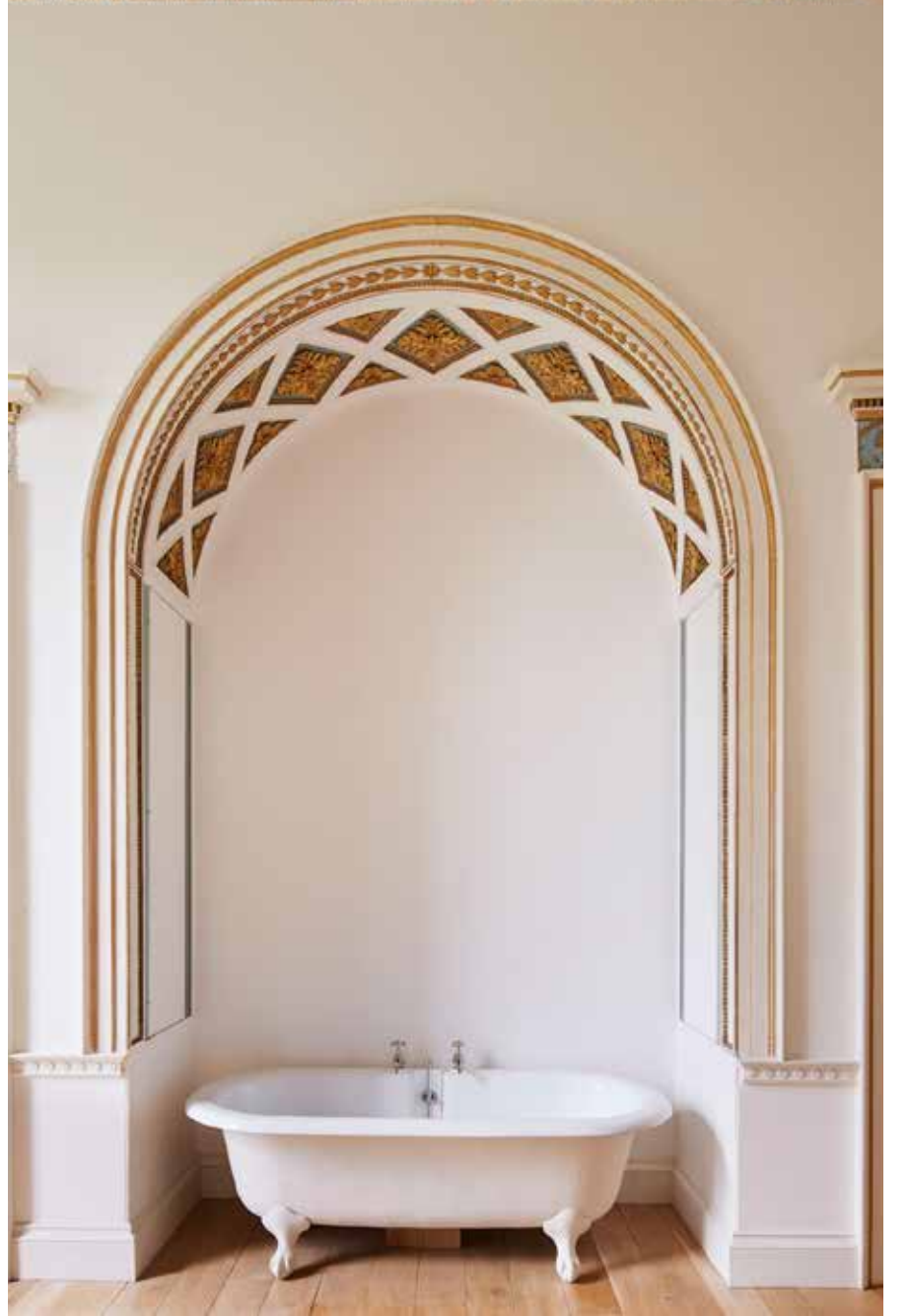
Guest Bedroom, with a high ceiling and fine cornice. Marble fireplace with raised fire basket with bath, wc and basin.

Private sitting room or further bedroom with a fine cornice and a marble fireplace with a sculptured pastoral scene and raised cast iron basket. An en suite bathroom is entered via two pairs of mahogany doors. The former Boudoir is probably one of the most attractive rooms in Wardour Castle.

The east end of the room is curved and has a pair of glazed and convex part coffered niches. The ceiling was originally designed by Sir John Soane and comprises a series of three linked oval gilded classic designs and a gilded and painted cornice. The fireplace is made of fleur de peche marble, inlaid with lapis and onyx, and is one of the most attractive fireplaces in the Castle. Opposite the fireplace is an arched recess with raised gild leaf decorative entablatures over the doors.









GROUND FLOOR

Leading off from either side of the Ante Hall of the Rotunda is a limestone floored circular Hallway running the circumference of the Rotunda and providing independent access to all of the main rooms on the ground floor. A Garden Room, with four display niches and French doors leads out onto south lawns. Kitchen/Breakfast Room, with French doors leading onto west lawns. An Office/Library has been used as a screening room. There are four further bedrooms with four further bathrooms (3 en suite). The gym has a vaulted ceiling and stone bolection fireplace and is accessed both off the east circular hallway and directly from the main communal entrance hall.



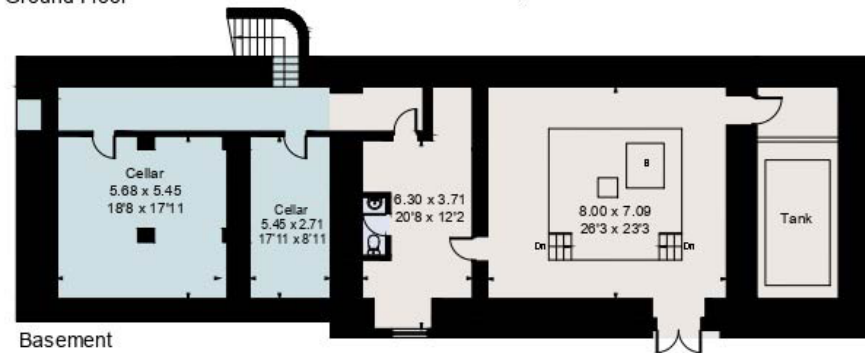
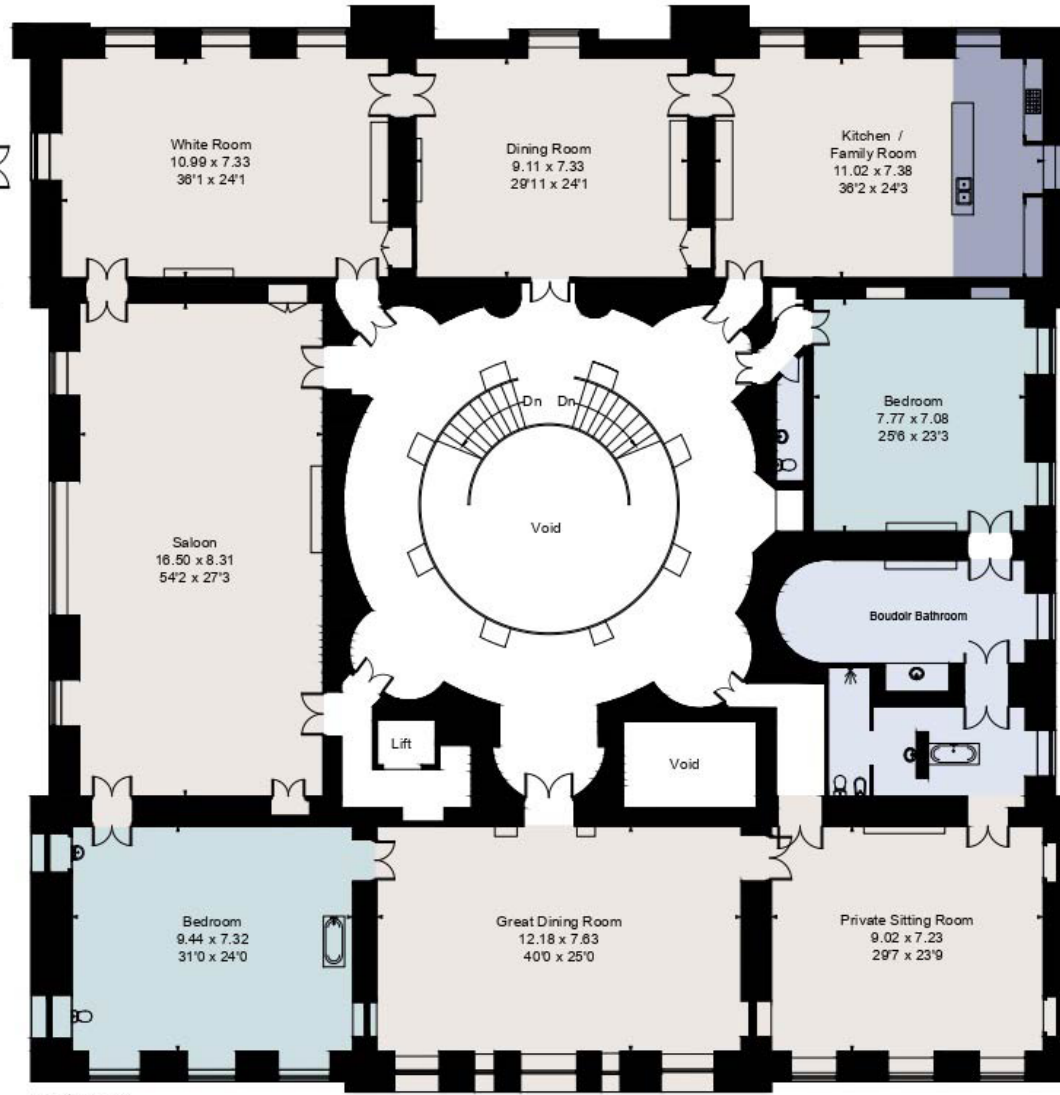
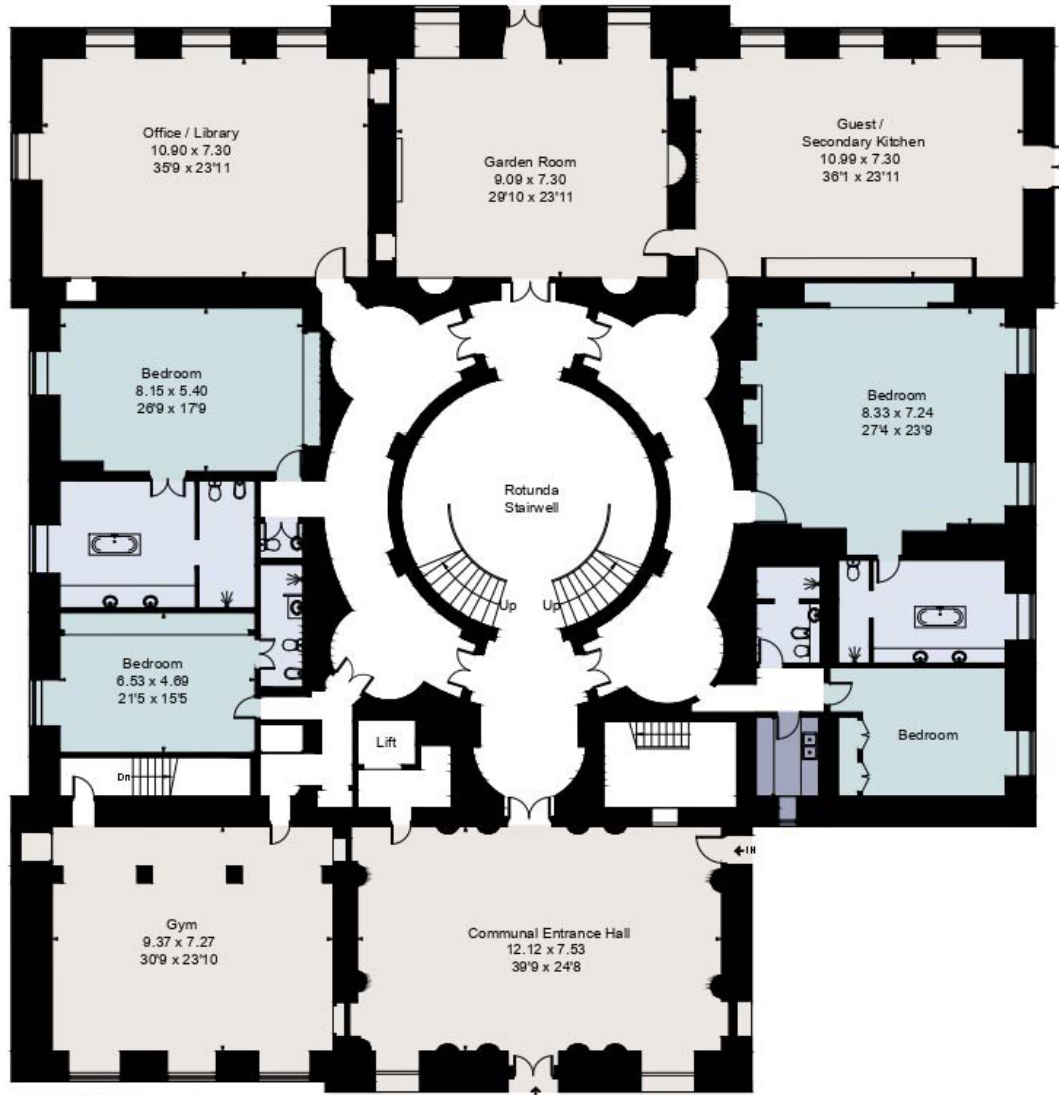






Initially converted in 2000 under the supervision of world renowned minimalist architects, John Pawson

FLOORPLANS



APPROXIMATE FLOOR AREA:

2154.0 sq m

23185 sq ft

SERVICES


Mains drainage. Mains water, oil-fired central heating, underfloor heating to bathrooms and some main rooms, lift to lower ground, ground and first floors.

WAYLEAVES, EASEMENTS AND RIGHTS OF WAY

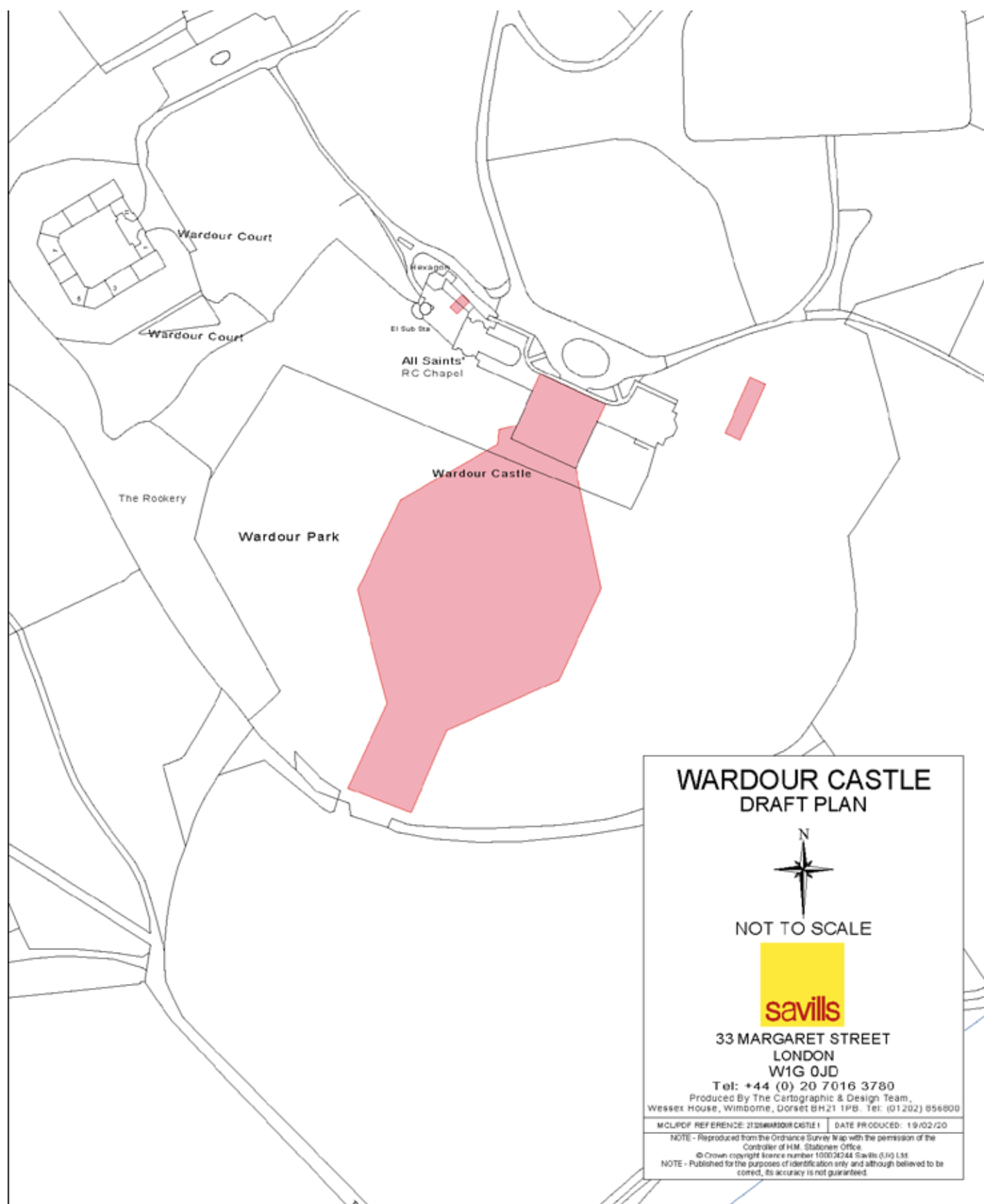
The property is offered for sale subject to and with the benefit of all such rights, covenants, wayleaves and easements. The property has the right to enjoy communal access over a much larger area of the Estate grounds.

LOCAL AUTHORITY

Salisbury District Council, Council House, Bourne Hill, Salisbury, SP1 3UZ
Tel: 01722 434 232



The apartment has unimpeded views across
the Estate to the Nadder Valley and
unspoilt Wiltshire countryside.



DIRECTIONS

From London: Take M3 motorway and proceed in a south-westerly direction. Leave the motorway at junction 8 taking the A303 to the south-west and Andover. Continue on the A303 pass Andover and Stonehenge. About 9 ½ miles after passing through the village of Winterbourne Stoke, take a left turn (at the bottom of a long dual carriageway) signposted Fonthill Bishop/Hindon/Tisbury.

Continue on this road to Fonthill Bishop and at the t-junction by a telephone box, turn right signposted Tisbury/Mere/Hindon. Shortly afterwards, take a left turn after a Post Office, which goes through a magnificent stone archway. After approximately 1 mile, turn left at the crossroads adjacent to the Beckford arms pub, signposted to Tisbury. On leaving Tisbury, passing the railway station on the left and proceeding under the railway bridge, take the first right turn signposted Old Wardour Castle (there is a farm on the left 150m after turning).

Continue along this road for approximately 1.5 miles ignoring the small turning left signposted to Old Wardour Castle (which is a ruin open to the public) and continue on until you see the next turn left signposted Wardour Castle (there is a grass island here). Turn here and note the entrance goes straight ahead on the sharp left hand bend at the top of the hill.

There are a number of excellent private day and boarding schools for girls and boys within easy reach, including notably Marlborough, Sherborne Schools, Bryanston, Port Regis, Millfield, Downside and Claysmore.

WARDOUR CASTLE

SAVILLS COUNTRY DEPARTMENT 33
MARGARET STREET
LONDON W1G 0JD

CAMILLA ELWELL



+44 (0) 207 016 3718



camilla.elwell@savills.com



+44 (0) 1722 426 822



james.mckillop@savills.com

SALISBURY OFFICE
ROLFES HOUSE
60 MILFORD ST
SALISBURY SP1 2BP

JAMES MCKILLOP



Viewing: Strictly by appointment with Savills.

Important notice: Savills, their clients and any joint agents give notice that:

1: They are not authorised to make or give any representations or warranties in relation to the property either here or elsewhere, either on their own behalf or on behalf of their client or otherwise. They assume no responsibility for any statement that may be made in these particulars. These particulars do not form part of any offer or contract and must not be relied upon as statements or representations of fact.

2: Any areas, measurements or distances are approximate. The text, photographs and plans are for guidance only and are not necessarily comprehensive. It should not be assumed that the property has all necessary planning, building regulation or other consents and Savills have not tested any services, equipment or facilities. Purchasers must satisfy themselves by inspection or otherwise.